

## MODULAR RESTRICTIVE VALVE



### Technical Specification

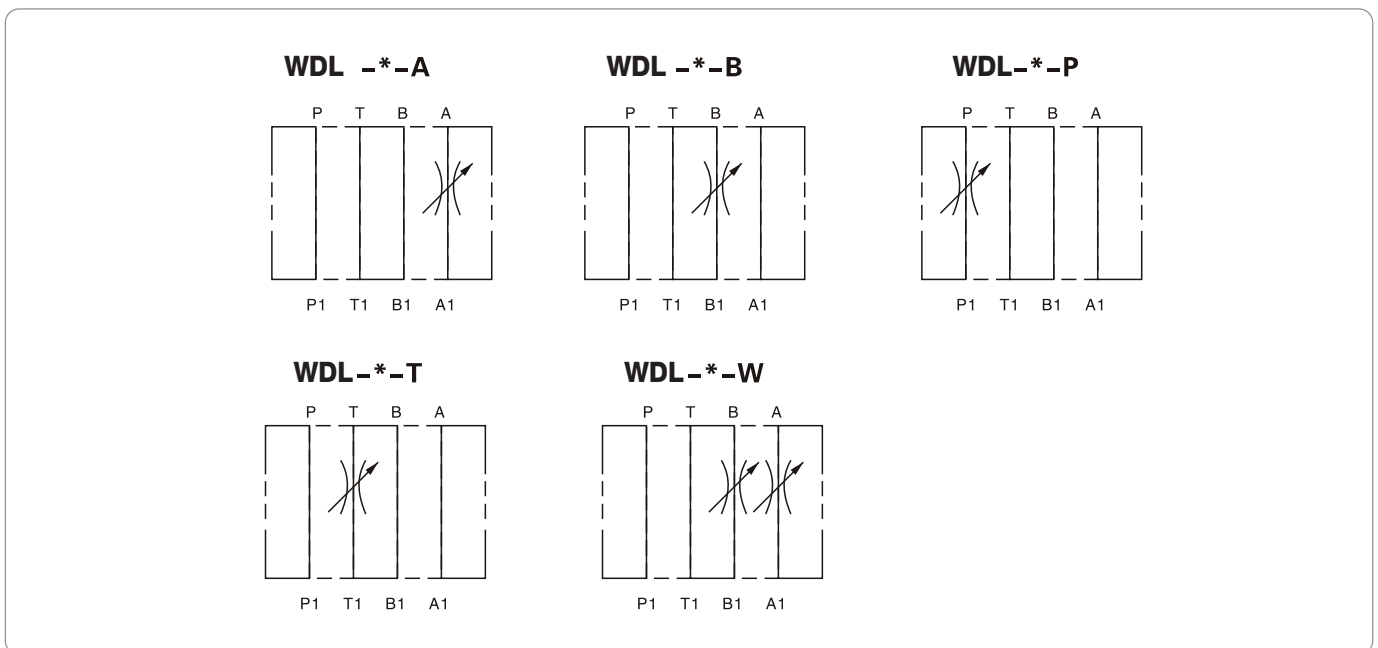
Specification	02	03
Maximum pressure (Bar)	315	
Max. Flow (L/min)	30	50
Working fluid	Mineral oil; phosphate-ester	
Fluid temp. (°C)	-20~70	
Viscosity (mm <sup>2</sup> /s)	2.8~380	
Cleanliness	The maximum allowable cleanliness of the oil should be according to 9th degree of Standard NAS 1638. It is suggested that the minimum filter rating should be $\beta_{10} \geq 75$ .	

### Model Description

**WDL - \* \* / \* 70 \***

Modular restrivtive valve  Specification 02 : DN6 03 : DN10  P : P Pipeline T : T Pipeline A : A Pipeline B : B Pipeline W : AB Pipeline	Remarks  Serial number  Seal material Omit : NBR Seals V : FPM Seals
--	--

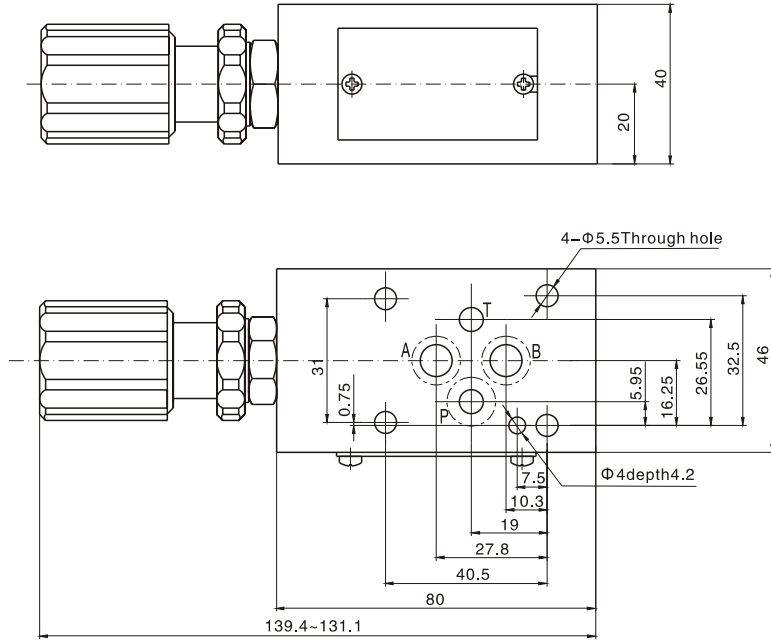
### Code Symbol



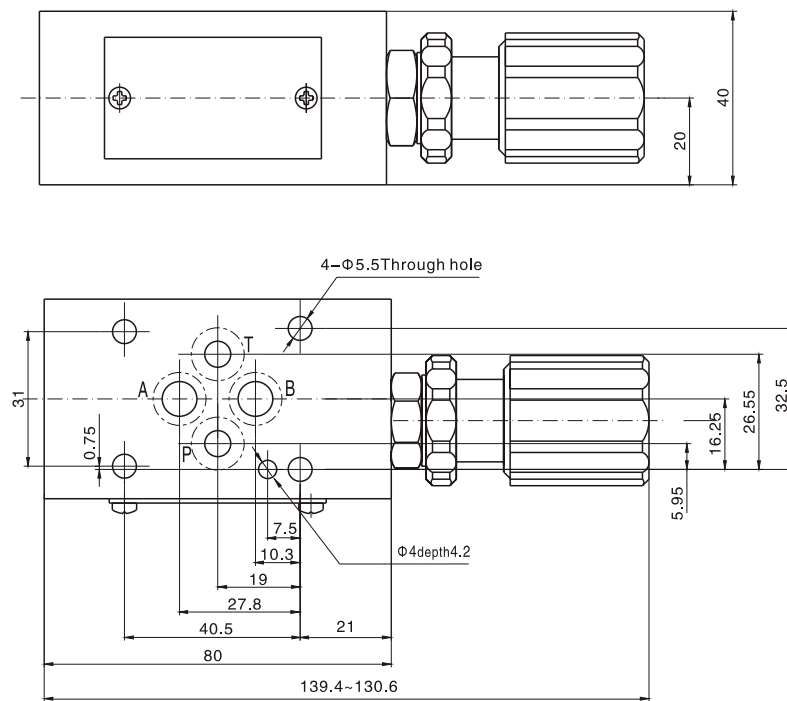
**MODULAR RESTRICTIVE VALVE**

**External Dimensions**

**WDL-02-A/...**



**WDL-02-P,B,T/...**

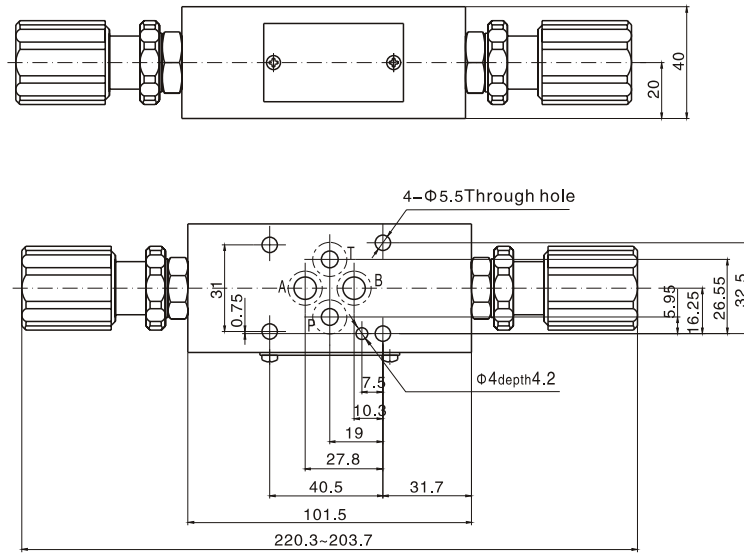


Notice: The surface, connecting with the valve, should be Ra0.8 roughness, and 0.01/100mm flatness.

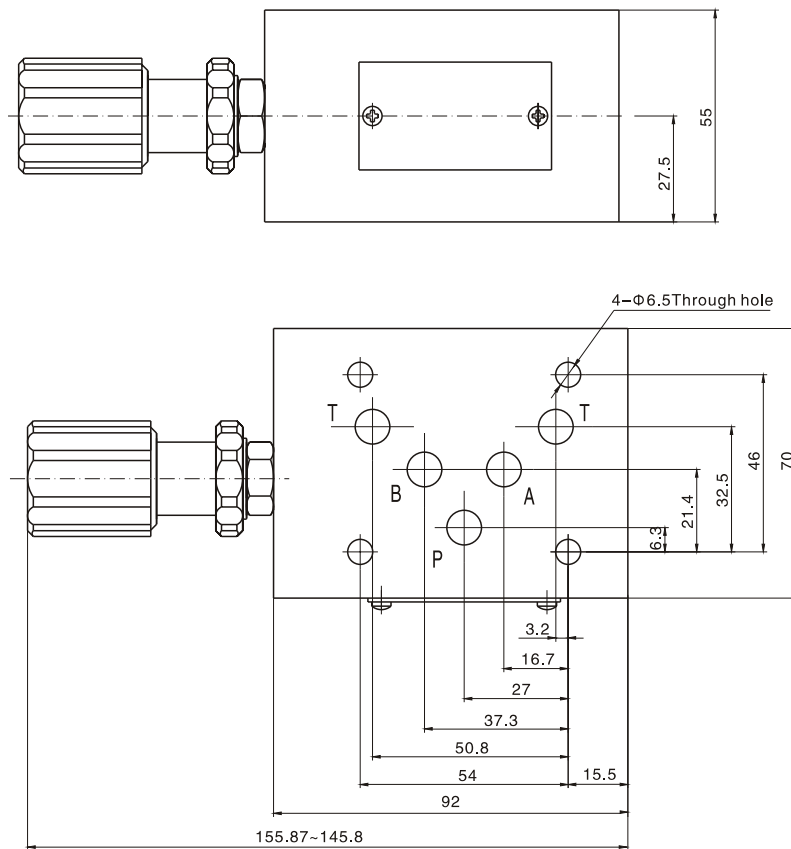
**MODULAR RESTRICTIVE VALVE**

**External Dimensions**

**WDL-02-W/...**



**WDL-03-A/...**

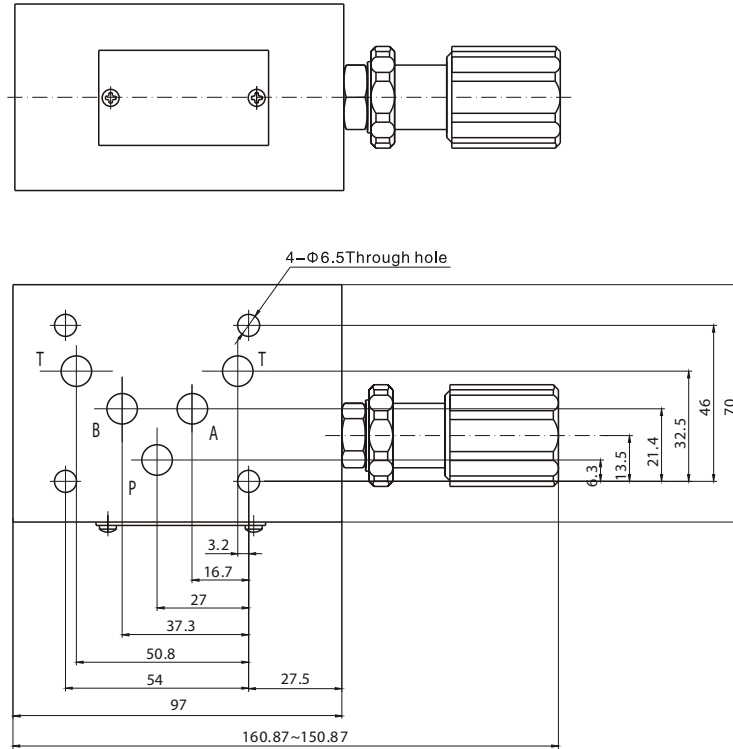


Notice: The surface, connecting with the valve, should be Ra0.8 roughness, and 0.01/100mm flatness.

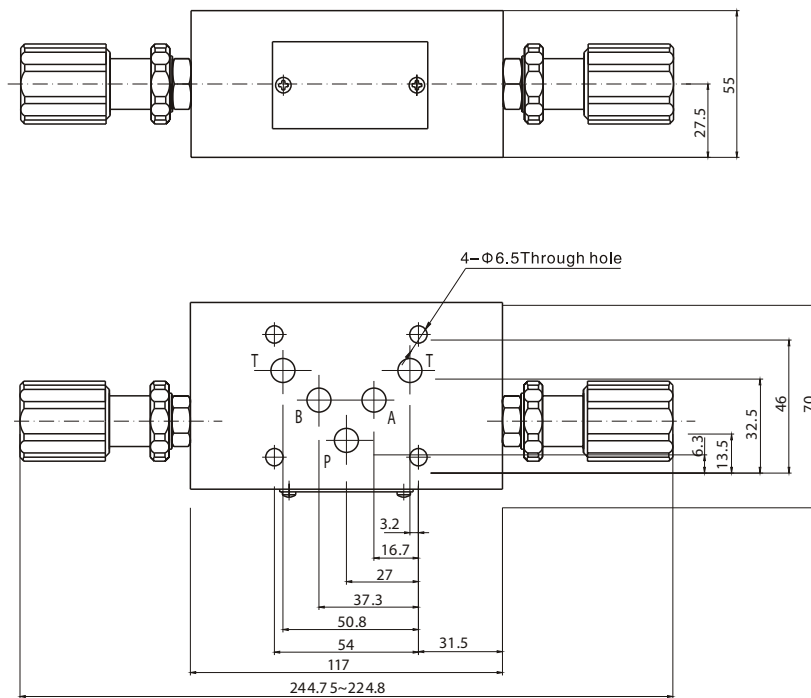
**MODULAR RESTRICTIVE VALVE**

**External Dimensions**

**WDL-03-P,B,T/...**



**WDL-03-W/...**



Notice: The surface, connecting with the valve, should be Ra0.8 roughness, and 0.01/100mm flatness.